



Penthomes
RESIDENCE THREE

THE
MILL
AT BROADWAY

Penthomes

The Penthomes at The Mill at Broadway offer elegant living in a thriving community just outside of Downtown Sacramento. Features such as single-floor living, private garages, and elevator-serviced residences set the Penthomes apart. All four Penthomes residences feature open floor plans and large outdoor balconies. Two residences also offer voluminous living rooms with large rooftop decks and functional mezzanines. Up-scale convenience, functional luxury, and floor plans designed for entertaining.

Penthomes

RESIDENCE THREE



1,445
Square Feet



2-Car
Garage



2
Bedrooms

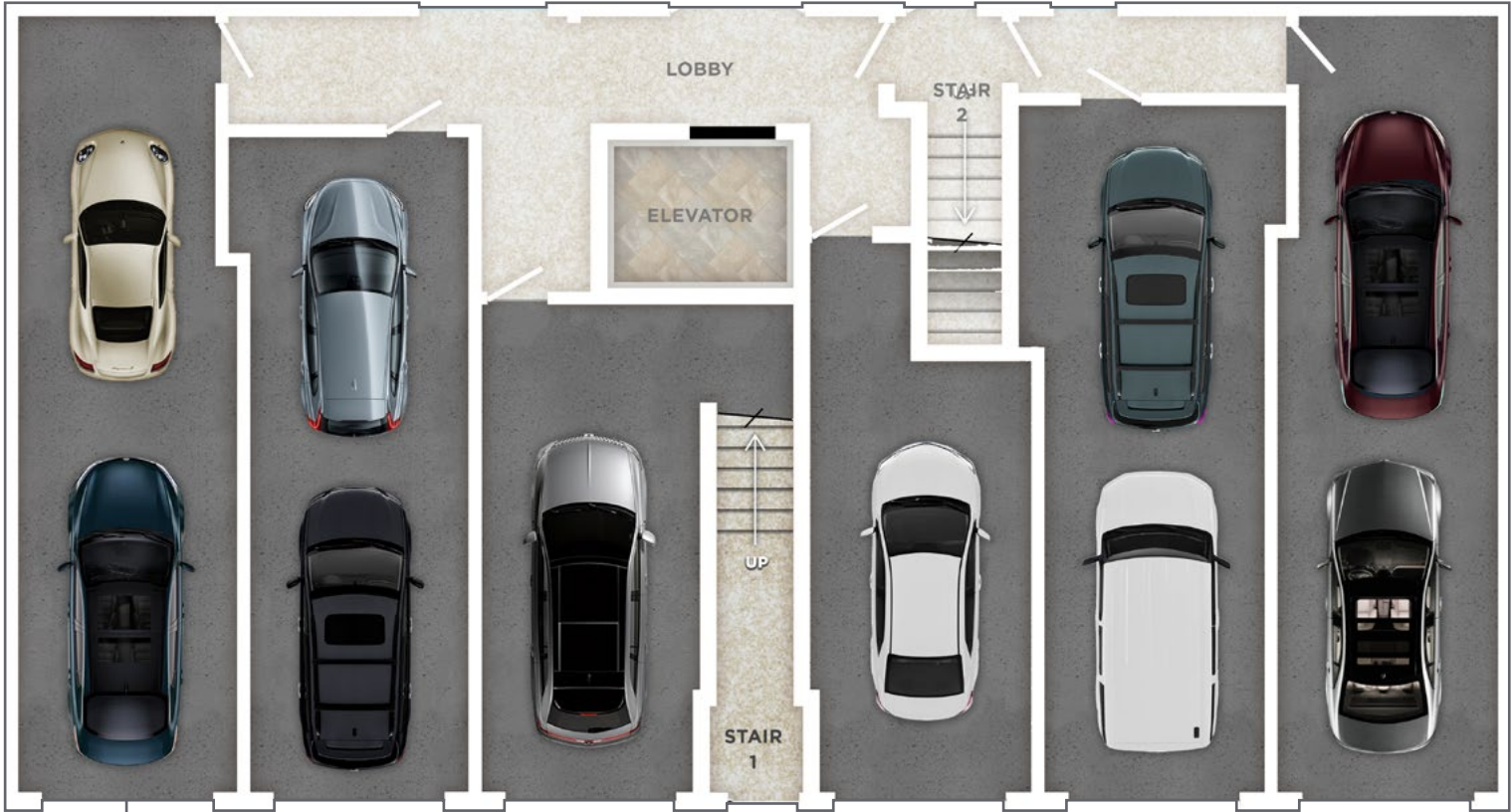


3
Bathrooms



Elevation Option A

Elevation Option B



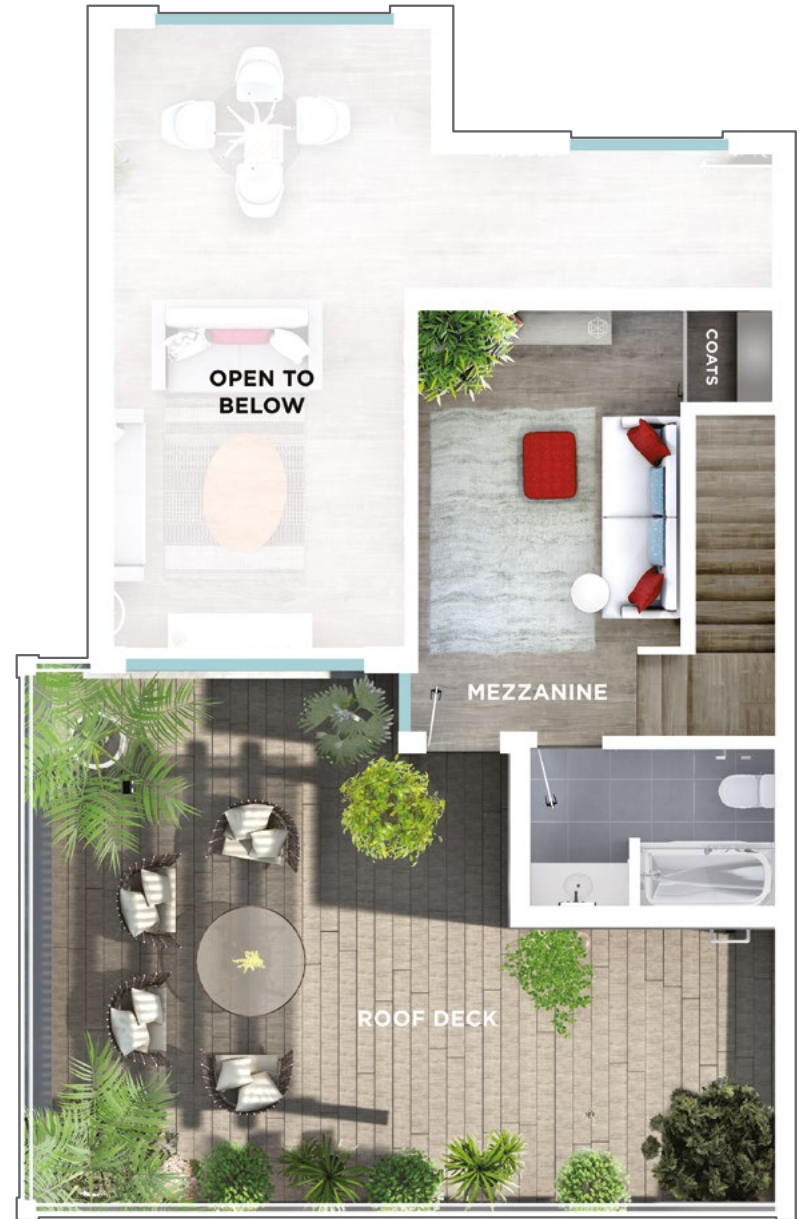
RESIDENCE THREE

GROUND FLOOR

Materials, options and furniture layouts shown are for illustrative purposes and may not be representative of the actual homes. See a Sales Associate for details.



LIVING LEVEL



MEZZANINE LEVEL

Materials, options and furniture layouts shown are for illustrative purposes and may not be representative of the actual homes. See a Sales Associate for details.