

A high-angle photograph of a modern living and dining area. In the foreground, a white sofa with a colorful patterned pillow and a dark grey cushion sits on a light-colored rug. A white coffee table with a metal base is in front of the sofa. To the right, a white kitchen island with a countertop and a red bag is visible. The background shows a white wall with two framed abstract art pieces, a white door, and a kitchen area with white cabinets and a tiled backsplash. Large windows on the left side offer a view of an outdoor area.

LANE HOMES  
—  
RESIDENCE TWO

THE  
**MILL**  
AT BROADWAY

# LANE HOMES

---

## ROOFTOP DECKS

Lane Homes Residence Two and Residence Three offer spacious roof-top decks perfect for entertaining or some inspiring morning reading.

## TWO-HOME BUILDINGS

Each Lane Home building features two residences attached side-by-side separated by a double wall to offer extra privacy.

## GREAT FOR SINGLES OR COUPLES

Lane Homes were built to optimize functional space; perfect if your looking for a low-maintenance home without the headaches of extra bedrooms.

## PRIVATE GARAGES

Park your car and walk directly into your home. Nothing can beat the security and flexibility of your own private garage.



# LANE HOMES

## RESIDENCE TWO



801  
Square Feet



1-Car  
Garage



1  
Bedroom + Loft



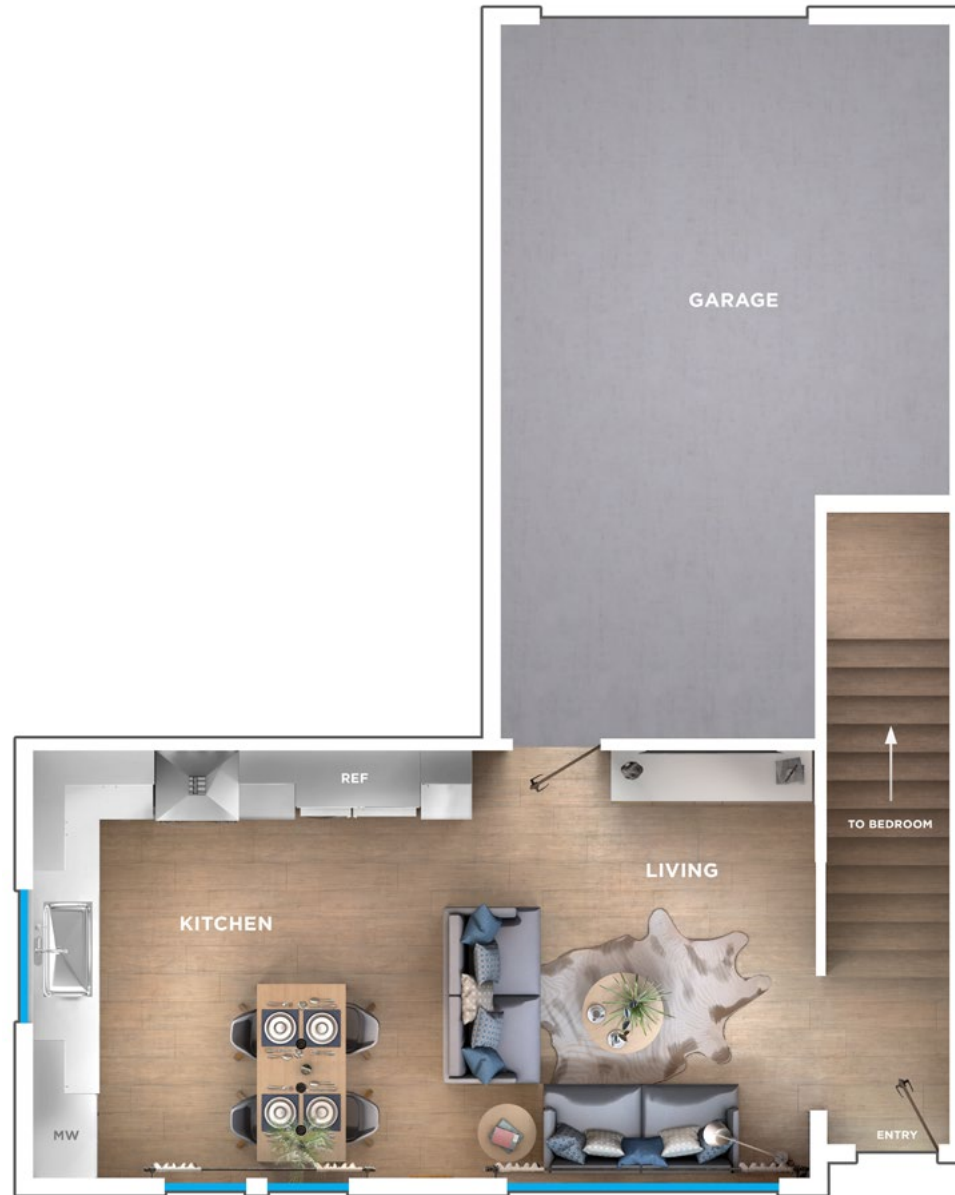
1  
Bathroom



RUSTIC STYLE



MODERN STYLE



## LEVEL ONE

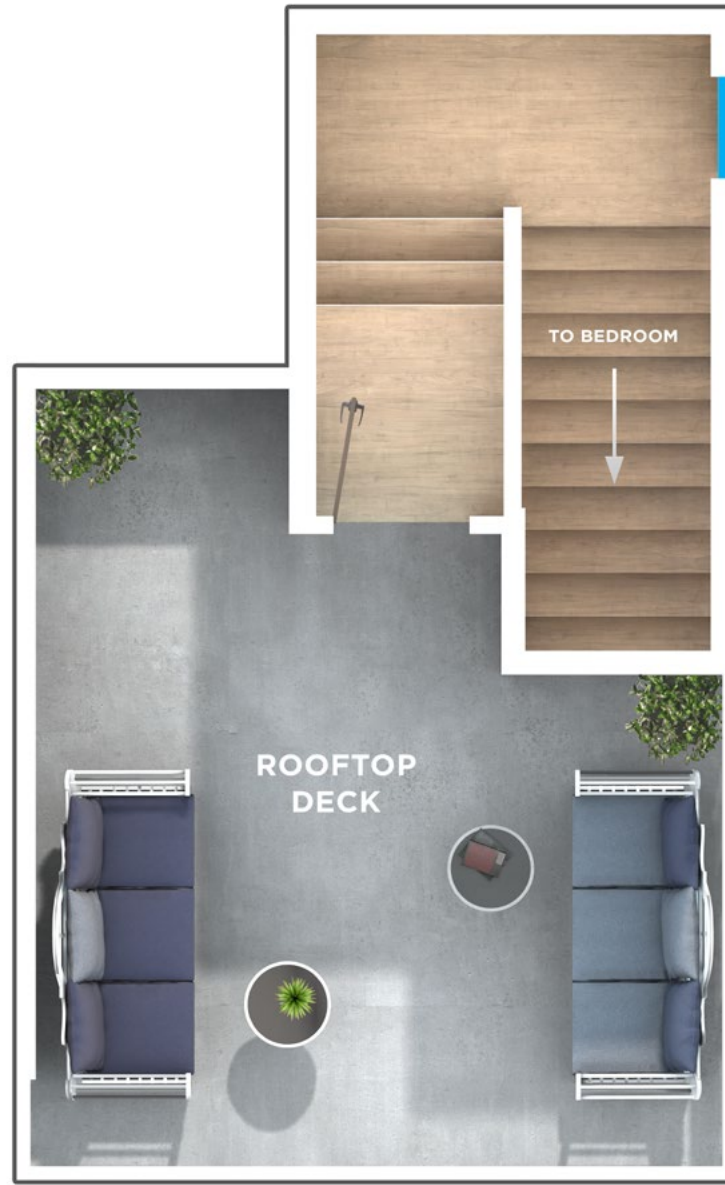
Materials, options and furniture layouts shown are for illustrative purposes and may not be representative of the actual homes. See a Sales Associate for details.





## LEVEL TWO

Materials, options and furniture layouts shown are for illustrative purposes and may not be representative of the actual homes. See a Sales Associate for details.



## LEVEL THREE

Materials, options and furniture layouts shown are for illustrative purposes and may not be representative of the actual homes. See a Sales Associate for details.